



# INDOFINE Chemical Company, Inc.

121 Stryker Lane, Bldg. 30, Suite 1 • Hillsborough, NJ 08844 • U.S.A.

Phone: (908) 359-6778 • FAX: (908) 359-1179

website: [www.indofinechemical.com](http://www.indofinechemical.com)

e-mail: [chemical@indofinechemical.com](mailto:chemical@indofinechemical.com)

## CERTIFICATE OF ANALYSIS

Catalog Number: 020976S

Product Name: **(+)-CATECHIN**  
(Catechin; Cianidanol; Dexcyanidanol; Cianidol; Catergen;  
Drenoliver; Biocatechin, Tanningenic acid; Cyanidol)

CAS Number: [154-23-4]

Lot Number: 1606831

Chemical Formula: C<sub>15</sub>H<sub>14</sub>O<sub>6</sub>

Molecular Weight: 290.28

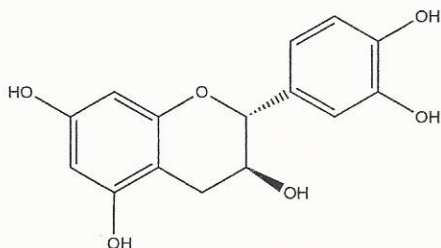
Appearance: Off-white powder

Loss on drying: 0.91%

Storage: Store in a cool, dry place. Protect from light.  
Store at 2-8°C

NMR Spectrum: Enclosed

Purity(HPLC): 99.54%





# INDOFINE Chemical Company, Inc.

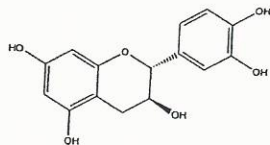
121 Stryker Lane, Bldg. 30, Suite 1 • Hillsborough, NJ 08844 • U.S.A.

Phone: (908) 359-6778 • FAX: (908) 359-1179

website: [www.indofinechemical.com](http://www.indofinechemical.com)

e-mail: [chemical@indofinechemical.com](mailto:chemical@indofinechemical.com)

## HPLC ANALYSIS

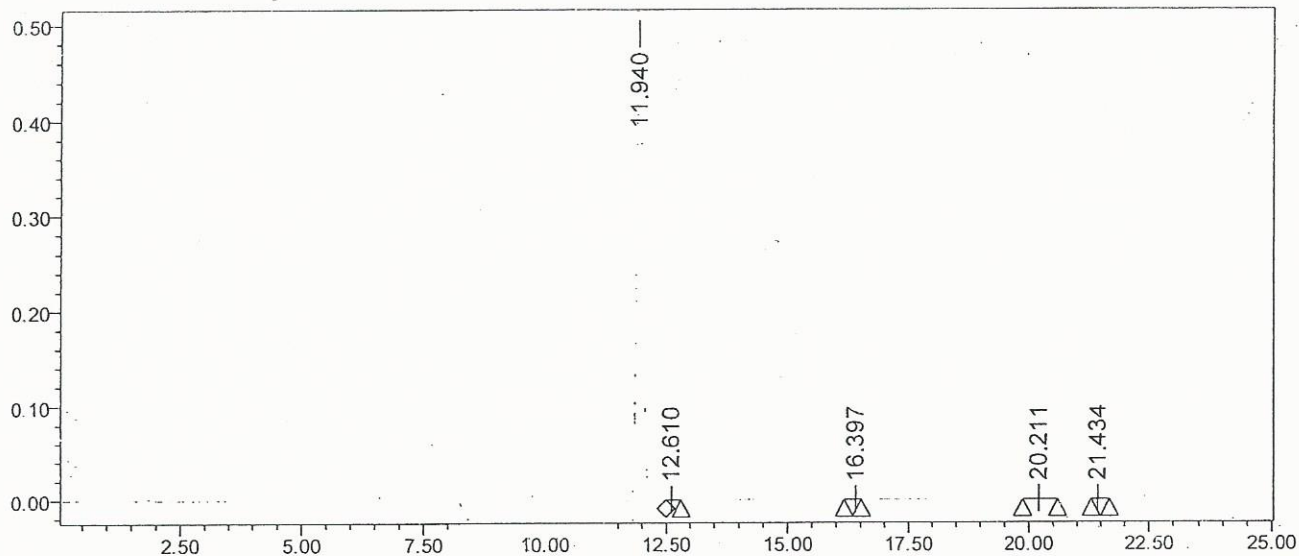


Catalog No.: 020976S  
Product Name: (+)-Catechin  
Lot No.: 1606831

### SAMPLE INFORMATION

Sample Name:	Catechin	Acquired By:	System
Sample Type:	Unknown	Sample Set Name:	
Vial:	1:A,2	Acq. Method Set:	Catechin
Injection #:	1	Processing Method:	Samples
Injection Volume:	10.00 ul	Channel Name:	278.0nm
Run Time:	25.0 Minutes	Proc. Chnl. Descr.:	PDA 278.0 nm

Auto-Scaled Chromatogram



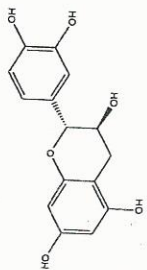
Peak Results

	RT	Area	% Area	USP Plate Count	USP Resolution
1	11.940	4414121	99.54	40126.53	
2	12.610	3340	0.08		
3	16.397	2046	0.05	151453.67	
4	20.211	9961	0.22	69772.54	15.75
5	21.434	4960	0.11	163678.53	4.66



**INDOFINE Chemical Company, Inc.**  
 121 STRYKER LANE  
 BLDG. 30, SUITE 1  
 HILLSBOROUGH, NJ 08844

Catalog No.: 020976S  
 Product Name: (+)-Catechin  
 Lot No.: 1606831



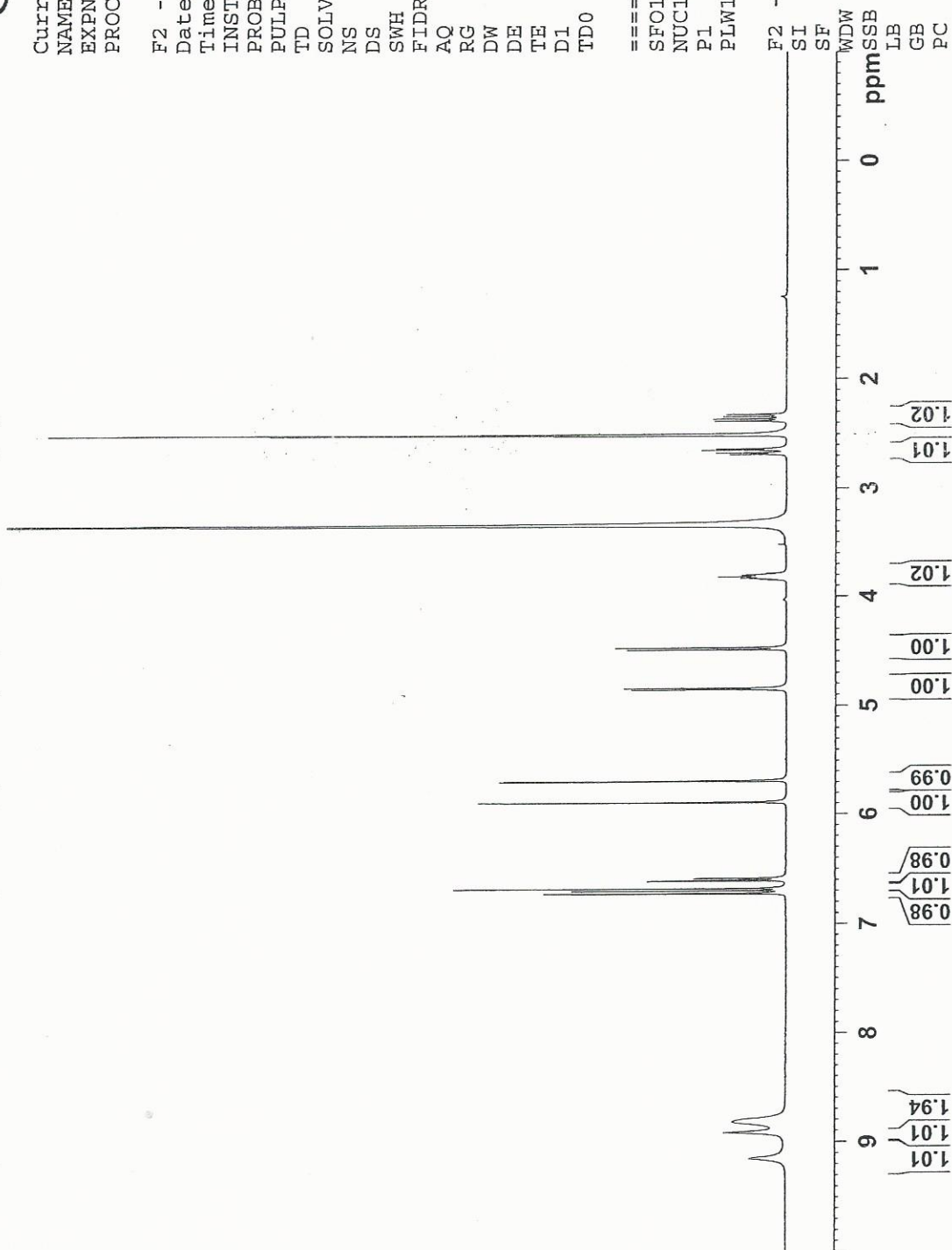
9.157  
9.153  
8.921  
8.824  
6.728  
6.723  
6.699  
6.679  
6.610  
6.605  
6.589  
6.585  
5.894  
5.888  
5.873  
5.694  
5.689  
4.856  
4.843  
4.490  
4.471  
3.850  
3.837  
3.831  
3.824  
3.818  
3.812  
3.805  
3.799  
3.785  
2.688  
2.675  
2.648  
2.635  
2.384  
2.384  
2.364  
2.344  
2.324

Current Data Parameters  
 NAME Catechin-1H NMR DMSO  
 EXPNO 1  
 PROCNO 1

F2 - Acquisition Parameters  
 Date\_ 20160527  
 Time 12.55  
 INSTRUM spect  
 PROBHD 5 mm PABBO BB/  
 PULPROG zg30  
 TD 65536  
 SOLVENT DMSO  
 NS 64  
 DS 2  
 SWH 8012.820 Hz  
 FIDRES 0.122266 Hz  
 AQ 4.0894465 sec  
 RG 202.5  
 DW 62.400 usec  
 DE 6.50 usec  
 TE 301.1 K  
 D1 2.00000000 sec  
 TD0 1

==== CHANNEL f1 =====  
 SFO1 400.1324710 MHz  
 NUC1 1H  
 P1 14.79 usec  
 PLW1 11.50800037 W

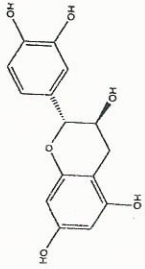
F2 - Processing parameters  
 SI 262144  
 SF 400.1300000 MHz  
 no



WDW 0  
 LB 0 Hz  
 GB 0  
 PC 1.00



**INDOFINE Chemical Company, Inc.**  
 121 STRYKER LANE  
 BLDG. 30, SUITE 1  
 HILLSBOROUGH, NJ 08844



9.157  
 9.153  
 8.921  
 8.824



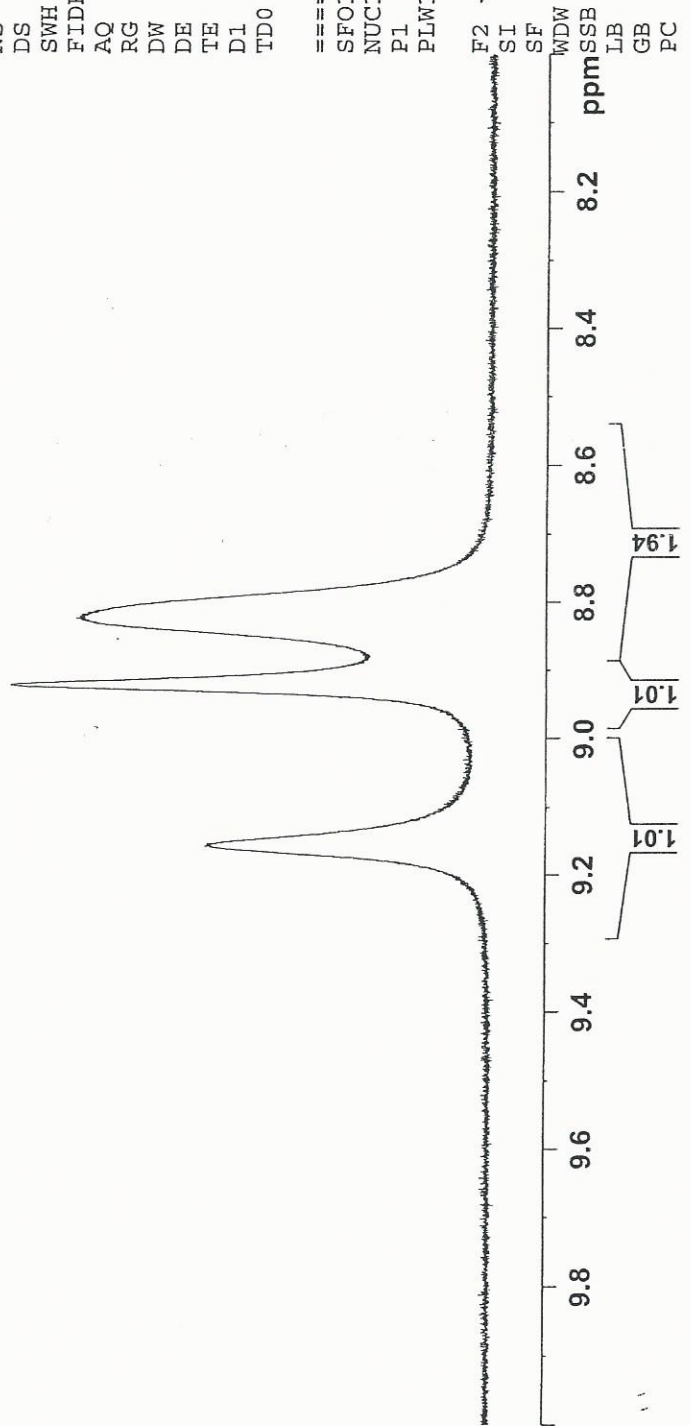
Catalog No.: 020976S  
 Product Name: (+)-Catechin  
 Lot No.: 1606831

Current Data Parameters  
 NAME Catechin-1H NMR DMSO  
 EXPNO 1  
 PROCNO 1

F2 - Acquisition Parameters  
 Date\_ 20160527  
 Time 12.55  
 INSTRUM spect  
 PROBHD 5 mm PABBO BB/  
 PULPROG zg30  
 TD 65536  
 SOLVENT DMSO  
 NS 64  
 DS 2  
 SWH 8012.820 Hz  
 FIDRES 0.122266 Hz  
 AQ 4.0894465 sec  
 RG 202.5  
 DW 62.400 usec  
 DE 6.50 usec  
 TE 301.1 K  
 D1 2.0000000 sec  
 TD0 1

==== CHANNEL f1 =====  
 SF01 400.1324710 MHz  
 NUC1 1H  
 P1 14.79 usec  
 PLW1 11.50800037 W

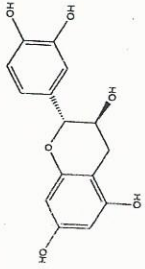
F2 - Processing parameters  
 SI 262144  
 SF 400.1300000 MHz  
 WDW no  
 SSB 0 Hz  
 LB 0  
 GB 0  
 PC 1.00





**INDOFINE Chemical Company, Inc.**  
 121 STRYKER LANE  
 BLDG. 30, SUITE 1  
 HILLSBOROUGH, NJ 08844

Catalog No.: 020976S  
 Product Name: (+)-Catechin  
 Lot No.: 1606831



6.728  
6.723  
6.699  
6.679  
6.610  
6.605  
6.589  
6.585

5.894  
5.888  
5.873

5.694  
5.689

Current Data Parameters  
 NAME Catechin-1H NMR DMSO  
 EXPNO 1  
 PROCNO 1

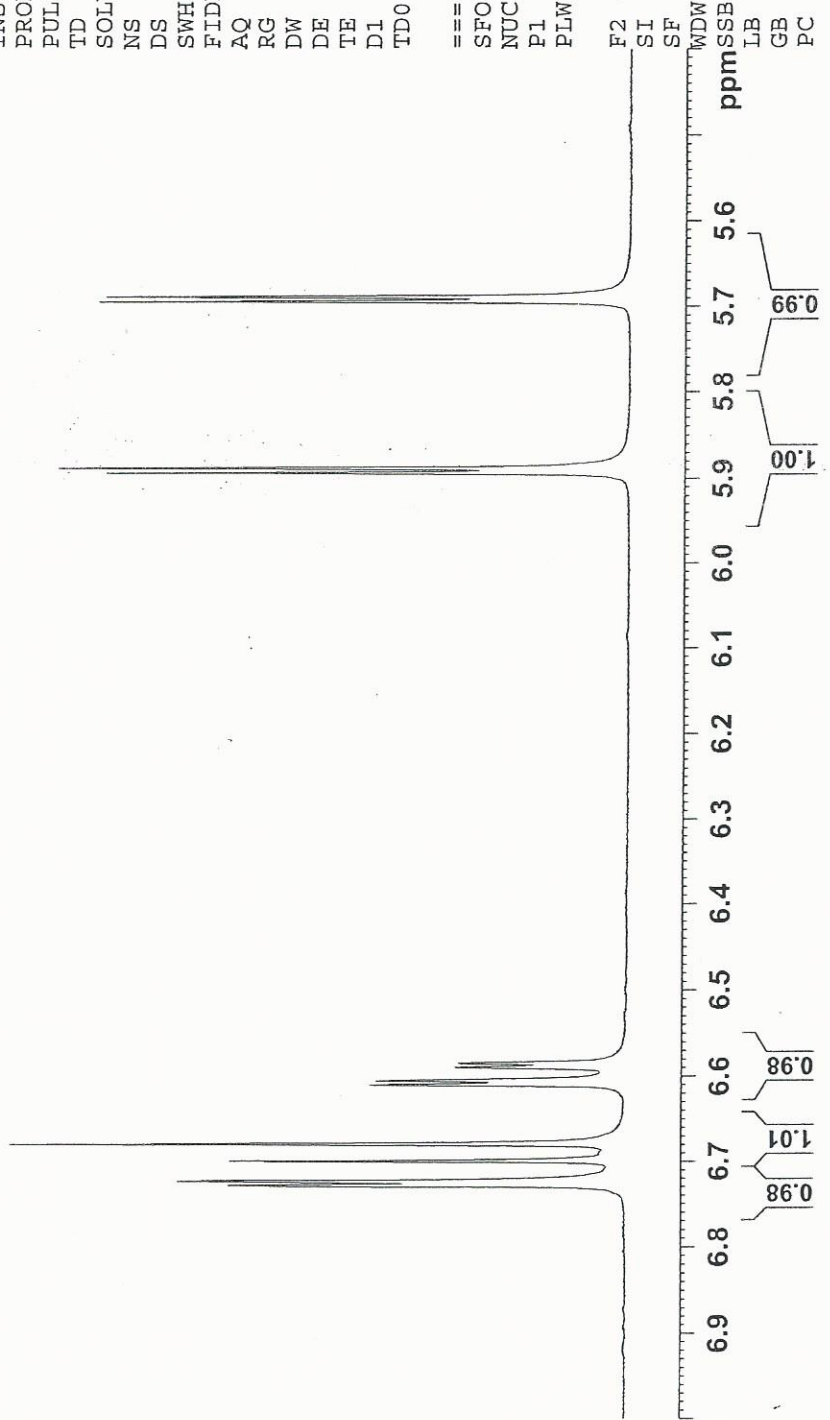
F2 - Acquisition Parameters

Date\_ 20160527  
 Time 12.55  
 INSTRUM spect  
 PROBHD 5 mm PABBO BB/  
 PULPROG zg30  
 TD 65536  
 SOLVENT DMSO  
 NS 64  
 DS 2  
 SWH 8012.820 Hz  
 FIDRES 0.122266 Hz  
 AQ 4.0894465 sec  
 RG 202.5  
 DW 62.400 usec  
 DE 6.50 usec  
 TE 301.1 K  
 D1 2.00000000 sec  
 TD0 1

==== CHANNEL f1 =====  
 SFO1 400.1324710 MHz  
 NUC1 1H  
 P1 14.79 usec  
 PLW1 11.50800037 W

F2 - Processing parameters

SI 262144  
 SF 400.1300000 MHz  
 WDW no  
 SSB 0  
 LB 0 Hz  
 GB 0  
 PC 1.00





INDOFINE Chemical Company, Inc.  
 121 STRYKER LANE  
 BLDG. 30, SUITE 1  
 HILLSBOROUGH, NJ 08844

Catalog No.: 020976S  
 Product Name: (+)-Catechin  
 Lot No.: 1606831



Current Data Parameters  
 NAME Catechin-1H NMR DMSO  
 EXPNO 1  
 PROCNO 1

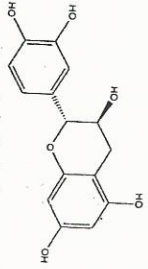
F2 - Acquisition Parameters

Date\_ 20160527  
 Time\_ 12.55  
 INSTRUM spect  
 PROBHD 5 mm PABBO BB/  
 PULPROG zg30  
 TD 65536  
 SOLVENT DMSO  
 NS 64  
 DS 2  
 SWH 8012.820 Hz  
 FIDRES 0.122266 Hz  
 AQ 4.089465 sec  
 RG 202.5  
 DW 62.400 usec  
 DE 6.50 usec  
 TE 301.1 K  
 D1 2.0000000 sec  
 TD0 1

==== CHANNEL f1 =====  
 SFO1 400.1324710 MHz  
 NUC1 1H  
 P1 14.79 usec  
 PLW1 11.50800037 W

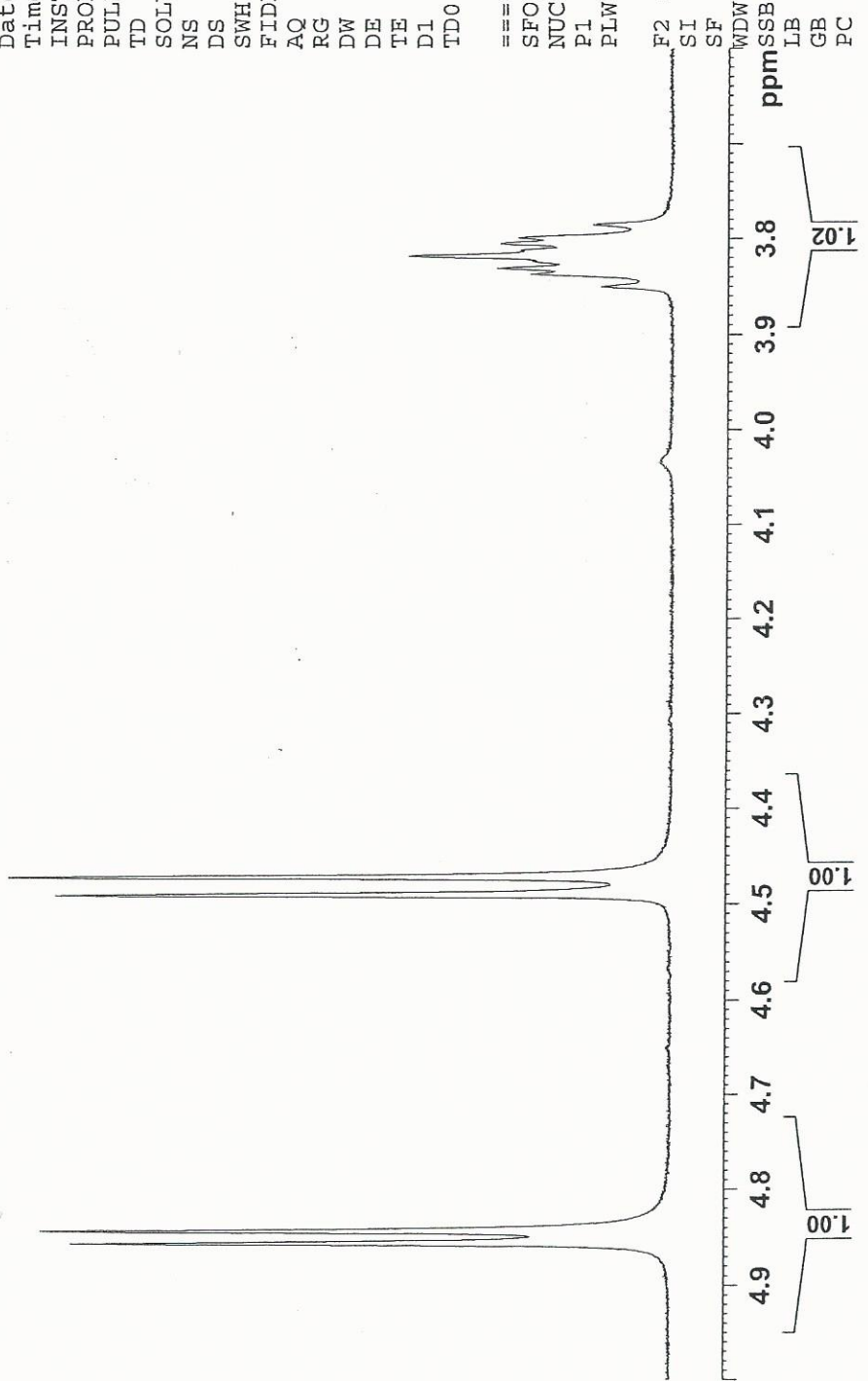
F2 - Processing parameters

SI 262144  
 SF 400.1300000 MHz  
 WDW no  
 SSB 0  
 LB 0 Hz  
 GB 0  
 PC 1.00



3.850  
 3.837  
 3.831  
 3.824  
 3.818  
 3.812  
 3.805  
 3.799  
 3.785

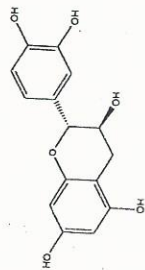
4.856  
 4.843  
 4.490  
 4.471





INDOFINE Chemical Company, Inc.  
 121 STRYKER LANE  
 BLDG. 30, SUITE 1  
 HILLSBOROUGH, NJ 08844

Catalog No.: 020976S  
 Product Name: (+)-Catechin  
 Lot No.: 1606831



2.384  
 2.364  
 2.344  
 2.324

2.688  
 2.675  
 2.648  
 2.635

Current Data Parameters  
 NAME Catechin-1H NMR DMSO  
 EXPNO 1  
 PROCNO 1

F2 - Acquisition Parameters  
 Date\_ 20160527  
 Time\_ 12.55  
 INSTRUM spect  
 PROBHD 5 mm PABBO BB/  
 PULPROG zg30  
 TD 65536  
 SOLVENT DMSO  
 NS 64  
 DS 2  
 SWH 8012.820 Hz  
 FIDRES 0.122266 Hz  
 AQ 4.0894465 sec  
 RG 202.5  
 DW 62.400 usec  
 DE 6.50 usec  
 TE 301.1 K  
 D1 2.00000000 sec  
 TD0 1

==== CHANNEL f1 =====  
 SF01 400.1324710 MHz  
 NUC1 1H  
 P1 14.79 usec  
 PLW1 11.50800037 W

F2 - Processing parameters  
 SI 262144  
 SF 400.1300000 MHz  
 WDW no  
 SSB 0 Hz  
 LB 0  
 GB 0  
 PC 1.00

